

# Friesen Electric

NEWSLETTER

Focusing On Automation

In this Issue

Touchscreen  
Networks

*Applying state-of-the-art electronic control solutions to industry specific applications.*

[sales@friesen.com](mailto:sales@friesen.com)

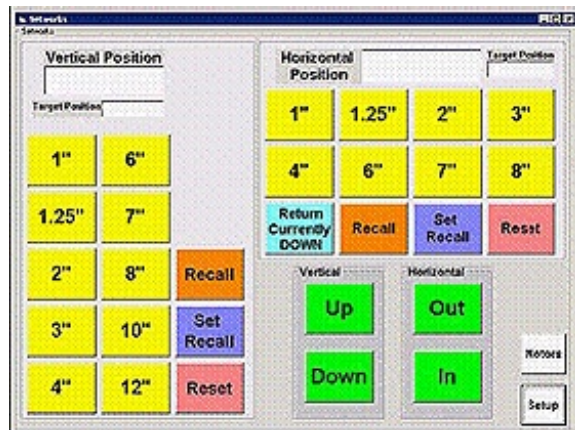
1-800-663-9414

## Automation

- Production Monitor
  - Set works
- Power Factor Monitoring & Correction
  - Wireless Remote Control
- Big Digit Production Displays
- Peak Power Monitoring & Control
- Energy Saving Vacuum Pump Controls
- Plate Cooler Energy Saver Controls
- HMI Touch Screen Interfaces
- Networked Motor Control
- Web Equipment Control

## Touchscreen Networks

Streamline your mill with our computerized networks. Increase efficiency and get rid of the headache from doing the math, let the computer do it! With one touch of a button the sawhead will move to a preset distance. You no longer have to manually make the usual fine adjustments required when doing it by eye.



*Information for Automatic Networks for Your Carriage or Band Mill:*

- Multi Axis (1,2 or 3 Axis)
- 12+ programmable set points
- Recall returns to adjustable set point
- Digital Display
- Exact positioning of sawblade
- Definable units (i.e. inches or cm)
- User friendly set up and usage
- Adaptable to all movable head saws
- Contact closure output for hydraulic or electrical control applications
- Factory configurable for custom applications.